

Route 305

Updated: December 2011

1972 Description: Big Sand Lake State Park

*(A) Commission Action July 28, 1972.

From the Boat Ramp at Big Sand Lake State Park easterly to Federal-aid Secondary Route 258

1983 Legislature Description:

From the Boat Ramp at Big Sand Lake State Park easterly to local road north of Upalco.

1985 Legislature: Description remains the same.

1986 Legislature: Description remains the same.

1987 Legislature: Description remains the same.

1988 Legislature: Description remains the same.

1990 Legislative Description:

Withdrawn in its entirety from the State Highway System.

Sometime between 1988 and 1990 this route was deleted by Transportation Planning because it was found there is no way to inventory said route.

* Refers to Resolution index page following.

Route 305

COUNTY/VOLUME & RESOLUTION NUMBER

A. Uintah Co. 4/37

B. Uintah Co.

DESCRIPTION OF RESOLUTION CHANGE

- | | |
|-----------------|--|
| (A). Addition - | Added Big Sand Lake State Park Road to State System of Highways. |
| (B). Deletion - | Deleted in its entirety from the State Highway System. |

File

SR-305

Duchesne
37

RESOLUTION
State Route 305
Page 2

RESOLUTION

State Route 305

2
227

WHEREAS, Section 63-11-20, Utah Code Annotated, 1953, as amended, relates that: "All roads connecting state parks with federal, state or county highways or city streets where the title thereto is in the state are parts of the state highway system and are to be maintained by the state. The state road commission is authorized to construct and maintain roads within state parks subject to approval of locations and design by the commission through its director", and

WHEREAS, it is the desire of the Utah State Road Commission and the Utah State Division of Parks and Recreation to define responsibility for the administration of roads at state parks, and

WHEREAS, it is agreed between the State Road Commission and the State Division of Parks and Recreation that certain roads meet the criteria set forth in Section 63-11-20, UCA, 1953, as amended, and

WHEREAS, those roads at state parks that are part of the State System of Highways should be identified by a number.

NOW THEREFORE, in accordance with Section 63-11-20, UCA, 1953, as amended, it is hereby resolved as follows:

That the proposed roadway from the boat ramp at Big Sand Lake State Park easterly to Federal-aid Secondary Route 258, State Collector Road 391 at a point approximately 1.2 miles north of Upalco, a distance of 0.47 +- mile, be identified as State Route 305,

That the letter from the Duchesne County Commission relating their concurrence in this action be hereby incorporated as a part of this submission,

That the maps attached illustrating the action taken herewith and the location of Big Sand Lake State Park be hereby incorporated as a part of this submission.

Dated this 28th day of July, 1972.

STATE ROAD COMMISSION OF UTAH

Henry H. Church
Chairman

B. L. Green Cox
Vice-Chairman

James F. Fitch
Commissioner

Ross H. Paul
Commissioner

Harold H. Hunter
Commissioner

ATTEST:

Robert G. Mallick
acting Secretary

May 19, 1972

Wilmer Murray, Chairman
Duchesne County Commission
Duchesne County Courthouse
Duchesne, Utah 84021

Subject Roads at State Parks

Dear Chairman Murray:

The State Division of Parks and Recreation and the State Highway Department have discussed proposals for the construction and maintenance of roads at State Parks. At a number of Parks existing roads need to be maintained and in some cases new construction is needed. Two of the Parks discussed are situated in Duchesne County. The two State Divisions have agreed upon a course of action at Big Sand Wash State Park and at Starvation Reservoir State Park, and if the County concurs we will make recommendations to the State Road Commission and the Legislature for approval.

The Big Sand marina is presently served by a road running from County Collector Road 391 to the boat ramp. This old road crosses the Big Sand dam. State Park plans call for a new road from the ramp below the dam to CR-391 to be built at some future date. The new road would be a State responsibility. It has been proposed that the old road from CR-391 to the ramp be maintained by the State Highway Department until the new road is built. The old road would then be abandoned or returned to the County, or private parties, for maintenance.

The Starvation Reservoir Park is now being served by the old US-40 which was returned to Duchesne County upon completion of the new US-40. State Park plans call for future construction of a new road from US-40 to the recreation area. It will be several years, however, before funds will be available for construction of this new access road. In the meantime it is proposed that the State Highway Department resume maintenance of old US-40 from the recreation area to Duchesne. When the

Chairman Wilmer Murray

Page 2

new connection is built, old US-40 would again revert to the County or be abandoned.

Before we recommend the stated proposals to the Road Commission we would like to have a statement from the Duchesne County Commission indicating its agreement or disagreement with the proposals.

Very truly yours,

Blaine J. Ray, P.E.
State Highway Engineer

BJK/HBL/bb

cc: Harold Tinpetts
L. R. Jester
R. B. Roberts
Ed. Lovelace
Commissioner Francis Felch

Chairman Wilmer Murray

Page 2

new connection is built, old US-40 would again revert to the County or be abandoned.

Before we recommend the stated proposals to the Road Commission we would like to have a statement from the Duchesne County Commission indicating its agreement or disagreement with the proposals.

Very truly yours,

Blaine J. Ray, P.E.
State Highway Engineer

BJK/HBL/bb

cc: Harold Tinpetts
L. R. Jester
R. B. Roberts
Ed. Lovelace
Commissioner Francis Felch

DUCHESNE COUNTY

Duchesne, Utah



June 14, 1972

Blaine J. Kay, P. E.
State Highway Engineer
Utah State Office Building

Dear Mr. Kay:

At their meeting held June 6, 1972 the Commissioners reviewed your letter of May 19, 1972 and approved your proposal for the construction and maintenance of roads to the State Parks at Sand Wash and Starvation Reservoir, with the understanding that you will maintain the present roads until the new roads have been completed, whereupon determination will be made as to whether the old road will be turned to the county, or some individual, or abandoned.

We appreciate your plans to build these roads, as we feel it is a definite service to the many people who will avail themselves of these recreation facilities.

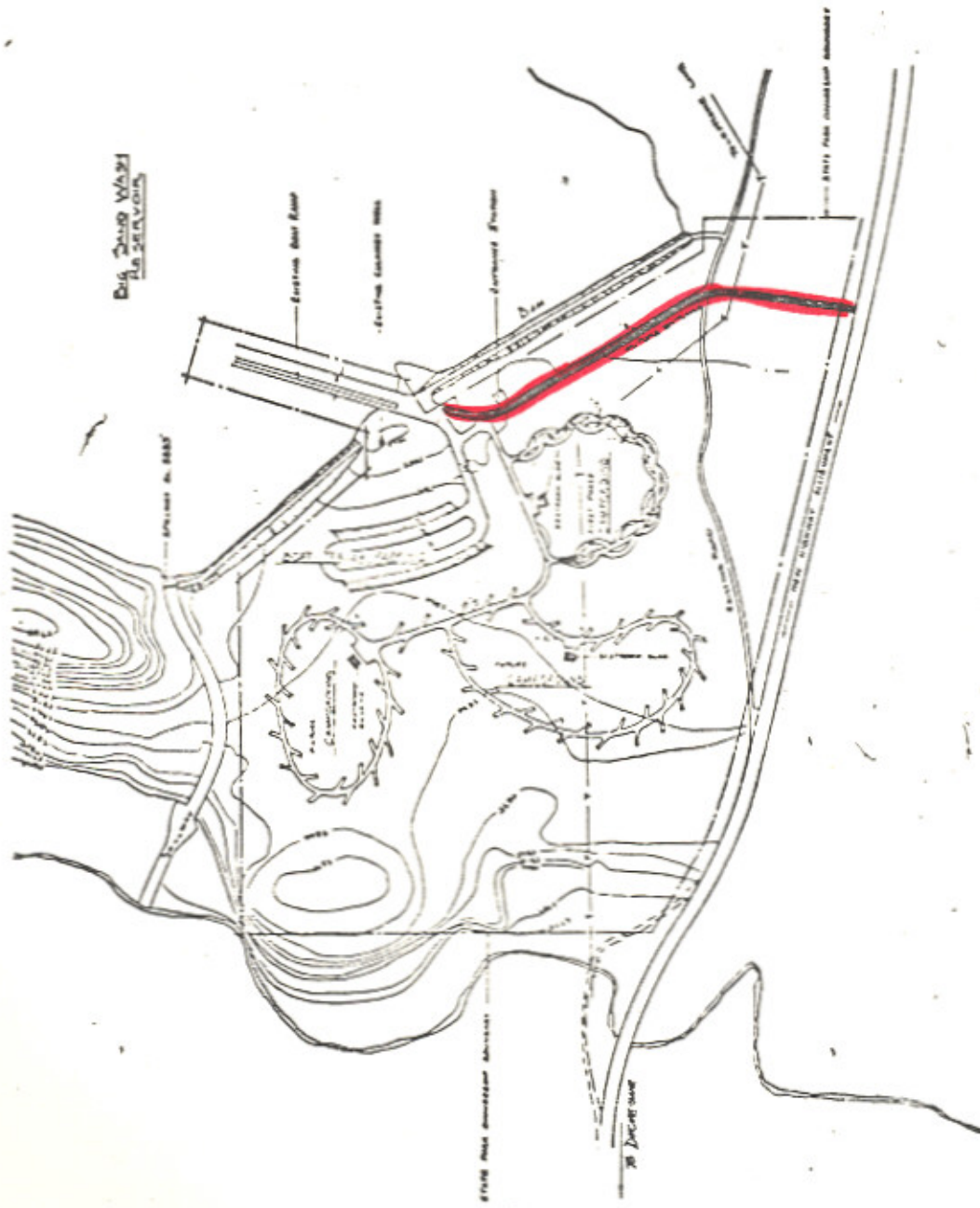
Sincerely yours,

James Cowan
County Clerk

JC/sw

COPY COMPLETELY RETAINED IN CENTRAL FILES. RETURN THIS ORIGINAL TO CENTRAL FILES AFTER ACTION HAS BEEN COMPLETED.

SEARCHED	INDEXED	SERIALIZED	FILED
<i>Kay</i>			
APPROVED TO SIGN		DATE	
S. S. [Signature]		[Date]	
[Signature]		[Date]	
My Signature			



**BIG SAND LAKE
STATE BEACH**

UTAH STATE DEPARTMENT OF HIGHWAYS
PLANNING DIVISION

DESIGNED BY: [Name]
DRAWN BY: [Name]
CHECKED BY: [Name]
DATE: JUL 15, 1964

UTAH STATE DEPARTMENT OF HIGHWAYS
Systems Planning Division

STATE ROUTE IDENTIFICATION
DUCESNE COUNTY

 Location State Route 305



UTAH STATE DEPARTMENT OF HIGHWAYS
Systems Planning Division

STATE PARKS LOCATION
DUCESNE COUNTY



Big Sand Lake

UTAH STATE DEPARTMENT OF HIGHWAYS

bc: Howard B. Leatham, Engineer for Planning & Programming

Same letter sent to: Mr. Norman V. Hancock, Chief, Game Management Sec., S.L.C.

Information sent to: District Engineers #1 Bert Taylor, #3 William D. Hurley,
District #4 James Deaton, #5 C. V. Anderson, #6 Edwin Lovelace

Jerry Fenn	Maurice Richey	Ellen Wandell	Charles Bertolina
Ralph Murdock	Clarence Stephens	Harold Brown	Jim West
Dean Steed	Evelyn Crill	Ray Behling	Don Jensen
Porter M. Gooch	Wallace Liddle	Bonnie Garcia	Clarence Bywater
Keith Rosevear	David Sargent	John W. Homer	Ken Riddle
Robert Walsh	David Kennison	Chauncey Powis	Winston Neiman
Lillian Witkowski	Robin Hood	E. Paul Gilgen	Robert Weadon
Mary Decker	Ezra Christensen	Bert Kros	Steve Lawson
Howard Richardson			

August 4, 1972

Mr. Harold J. Tippetts, Director
Parks and Recreation Division
1596 West North Temple Street
Salt Lake City, Utah 84104

Dear Mr. Tippetts:

Subject: State Park Roads 305, 306, 307, 308, 309, 310, 311 and 312
in Utah

Effective July 28, 1972, the State Road Commission of Utah adopted resolutions to identify those roadways described in the attached resolutions as a part of the State System of Highways.

Attached are copies of the resolutions and location maps.

Very truly yours,

L. R. Jester, P.E.
Chief, Systems Planning Div.

Attachment

Letters pertaining to routes within their county were sent to:

Wilmer Murray, Duchesne County
H. Bernell Lewis, Kane County
Harry J. Wilkinson, Morgan County
George R. Jefferson, Beaver County

Gardell Snow, Emery County
M. Truman Bowler, Washington County
Don E. Chase, Box Elder County

BDB:WDM:RDent:bt